



One-stop shop

On-time delivery

Independent technical advice

APP CONNECTORS



Anderson Power Products® (APP®), is an international leader in high power interconnect solutions. In 1877, Anderson began as a small company in Boston, MA making innovative trolley and railway power designs. Today as a subsidiary of IDEAL® Industries APP connectors are used around the world across many markets including: Telecom & IT Equipment, Motive Power, and Alternative Energy. APP offers a range of connectors to meet power, signal, & ground needs in protected or environmentally exposed applications.

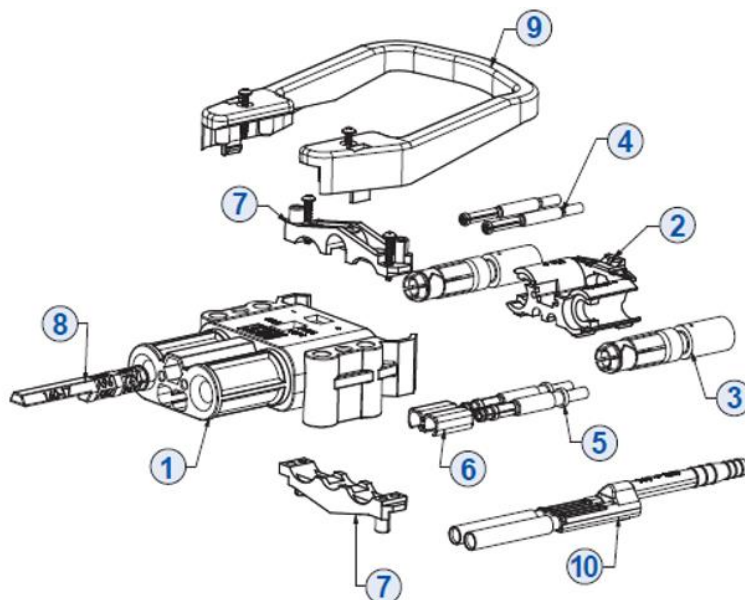


E series

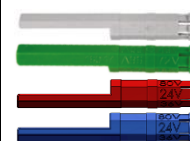
The Anderson™ family of Euro Battery Connectors (EBC) are expertly designed for ease of use and incorporate an innovative contact carrier to simplify assembly. The EBC connectors include the industry standard 80, 160, and 320 sizes, all in accordance with DIN 43589-1 and VDE0623-589 (new standard). Design and materials offer performance that meets or exceeds all the requirements of EN1175 (2020). All materials chosen are RoHS compliant and selected to ensure years of reliability in adverse industrial environments. These attributes make the EBC DIN connectors the ideal choice for a wide range of industrial applications in the Material Handling, Battery Charging, Utility Vehicles, Motive Power, and Sweeper/Scrubbers markets amongst many others.

**E-80****E-160****E-320**

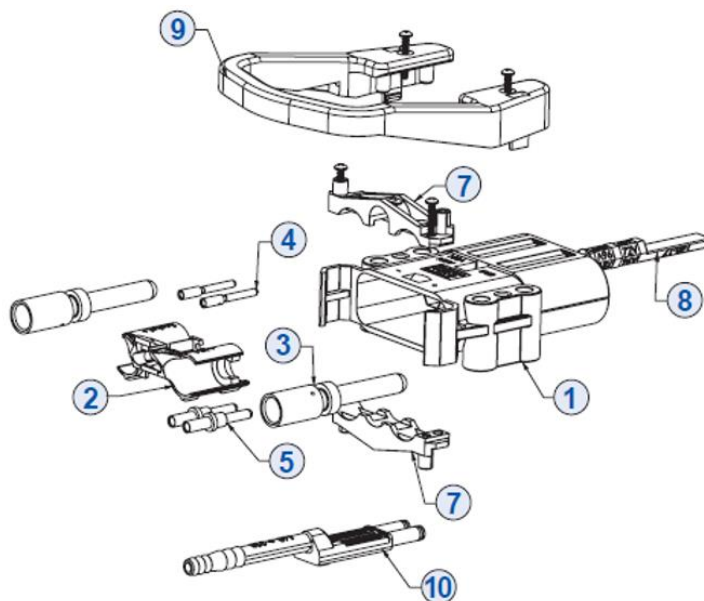
E80



Female connector E80		
Item	Ordering code	Description
1+2+6+7+8	E80500-0009	Housing APP type "E" 80 – Female – Grey Coding Pin
3	EC80-1110 EC80-1116 EC80-1125 EC80-1135	Main Contact APP DIN 80 Female – 10 mm ² (8 AWG) Main Contact APP DIN 80 Female – 16 mm ² (6 AWG) Main Contact APP DIN 80 Female – 25 mm ² (4 AWG) Main Contact APP DIN 80 Female – 35 mm ² (2 AWG)
4	EHC80-33	Upper Auxiliary Contact APP DIN type 80 "E" Female – 1,5 mm ²
5*	EPC80-31	Lower Pilot Auxiliary Contact APP DIN type 80 "E" Female – 1,5 mm ²
6	NA	Not applicable on E80
8	EVKS80-9 EVKD80-17 EVKS80-23F EVKD80-22F	Coding Pin DIN 80 Grey – Wet Coding Pin DIN 80 Green – Dry Coding Pin DIN 80 Red – Wet – High Current Coding Pin DIN 80 Blue – Dry – High Current
9	EHD80-8 EHD80-8-R	Handle APP DIN 80 Low Profile with 2 screws Red Handle APP DIN 80 Low Profile with 2 screws
10*	ETAT80-21	Air Adapter APP DIN type 80 – Female



* Lower pilot auxiliary contacts use the same housing location as air tubes so they cannot be used together



Male connector E80		
Item	Ordering code	Description
1+2+7+8	E80400-0009	Housing APP type "E" 80 – Male – Grey Coding Pin
3	EC80-1010 EC80-1016 EC80-1025 EC80-1035	Main Contact APP DIN 80 Male – 10 mm ² (8 AWG) Main Contact APP DIN 80 Male – 16 mm ² (6 AWG) Main Contact APP DIN 80 Male – 25 mm ² (4 AWG) Main Contact APP DIN 80 Male – 35 mm ² (2 AWG)
4	EHC80-32	Upper Auxiliary Contact APP DIN type 80 "E" Male – 1,5 mm ²
5*	EPC80-30	Lower Pilot Auxiliary Contact APP DIN type 80 "E" Male – 2,5 mm ²
8	EVKS80-9 EVKD80-17 EVKU80-19 EVKS80-23M EVKD80-22M	Coding Pin DIN 80 Grey – Wet Coding Pin DIN 80 Green – Dry Coding Pin DIN 80 Yellow – Universal Coding Pin DIN 80 Red – Wet – High Current Coding Pin DIN 80 Blue – Dry – High Current
9	EHDL80-8 EHDL80-8-R	Handle APP DIN 80 Low Profile with 2 screws Red Handle APP DIN 80 Low Profile with 2 screws
10*	ETAT80-20	Air Adapter APP DIN 80 – Male



* Lower pilot auxiliary contacts use the same housing location as air tubes so they cannot be used together



Ordering code

Example:

E80535-1009

Series: _____

E80

Gender: _____

4 – Male

5 – Female

Main contacts: _____

00 – Non – order separately

10 – 10 mm² (8 AWG)

16 – 16 mm² (6 AWG)

25 – 25 mm² (4 AWG)

35 – 35 mm² (2 AWG)

Handle: _____

0 – None

1 – Black*

2 – Red*

*E80 comes with the low profile T handle.

Coding key: _____

0 – Grey, wet cell

2 – Green, dry cell

3 – Yellow, universal (only on male housing)

4 – Blue, dry cell, high current

5 – Red, wet cell, high current

Auxiliary contacts & Air Tubes: _____

0 – None

1 – Lower pilot auxiliary contacts

2 – Upper auxiliary contacts

4 – Lower pilot auxiliary & upper auxiliary contacts

5 – Air Tube

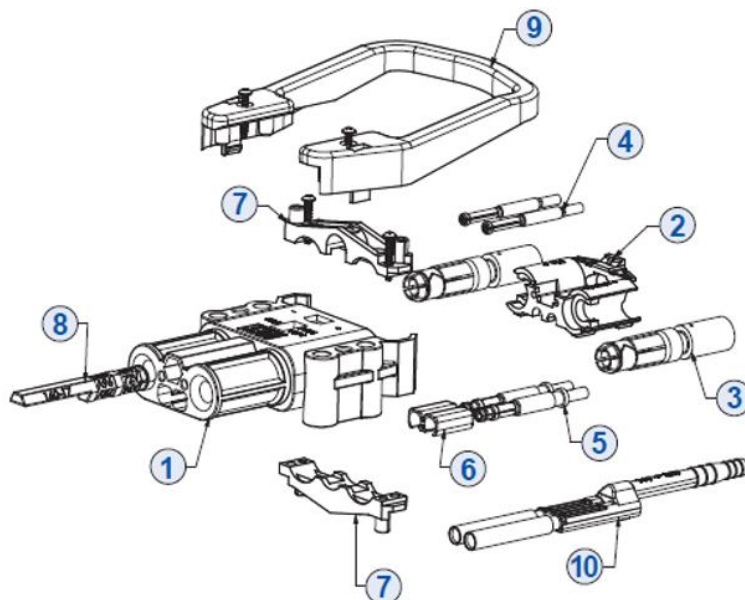
6 – Air Tube & Upper auxiliary contacts

Packing: _____

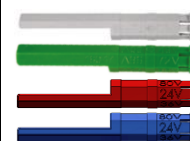
9 – Individual

8 – Bulk

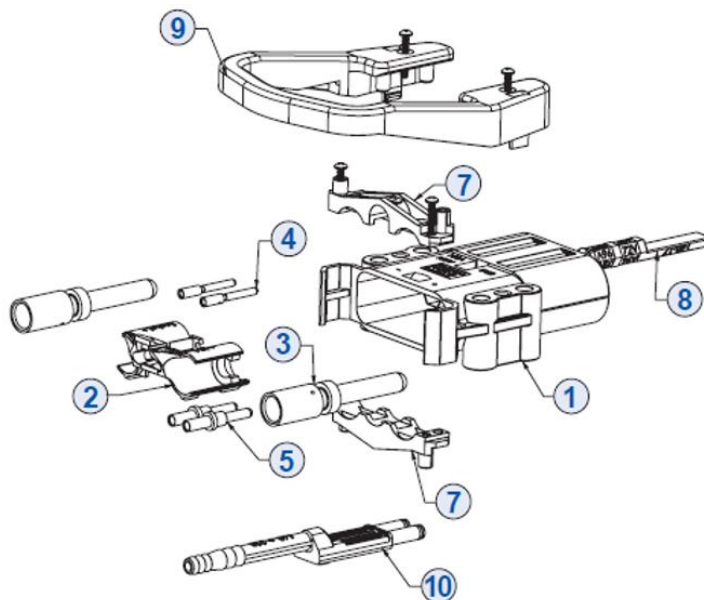
E160



Female connector E160		
Item	Ordering code	Description
1+2+6+7+8	E16500-0009	Housing APP type "E" 160 – Female – Grey Coding Pin
3	EC160-1116 EC160-1125 EC160-1135 EC160-1150	Main Contact APP DIN 160 Female – 16 mm ² (6 AWG) Main Contact APP DIN 160 Female – 25 mm ² (4 AWG) Main Contact APP DIN 160 Female – 35 mm ² (2 AWG) Main Contact APP DIN 160 Female – 50 mm ² (1 to 1/0 AWG)
4	EHC160-33	Upper Auxiliary Contact APP DIN type 160 "E" Female – 4,0 mm ²
5*	EPC160-13	Lower Pilot Auxiliary Contact APP DIN 160/320 "E" Female – 6,00 mm ²
6	EACH320-38	Auxiliary Contact Holder APP DIN 160/320
8	EVKS160-9 EVKD160-17 EVKS160-23F EVKD160-22F	Coding Pin DIN 160/320 Grey – Wet Coding Pin DIN 160/320 Green – Dry Coding Pin DIN 160/320 Red – Wet – High Current Coding Pin DIN 160/320 Blue – Dry – High Current
9	EHDL160-320-H EHDL160-320-L	Handle APP DIN 160/320 High Profile with 2 screws Handle APP DIN 160/320 Low Profile with 2 screws
10*	ETAT160-21	Air Adapter APP DIN type 160 – Female






* Lower pilot auxiliary contacts use the same housing location as air tubes so they cannot be used together



Male connector E160		
Item	Ordering code	Description
1+2+7+8	E16400-0009	Housing APP type "E" 160 – Male – Grey Coding Pin
3	EC160-1016 EC160-1025 EC160-1035 EC160-1050	Main Contact APP DIN 160 Male – 16 mm ² (6 AWG) Main Contact APP DIN 160 Male – 25 mm ² (4 AWG) Main Contact APP DIN 160 Male – 35 mm ² (2 AWG) Main Contact APP DIN 160 Male – 50 mm ² (1 to 1/0 AWG)
4	EHC160-32	Upper Auxiliary Contact APP DIN type 160 "E" Male – 4,0 mm ²
5*	EPC160-12	Lower Pilot Auxiliary Contact APP DIN 160/320 "E" Male – 6,0 mm ²
8	EVKS160-9 EVKD160-17 EVKU160-19 EVKS160-23M EVKD160-22M	Coding Pin DIN 160/320 Grey – Wet Coding Pin DIN 160/320 Green – Dry Coding Pin DIN 160/320 Yellow – Universal Coding Pin DIN 160/320 Red – Wet – High Current Coding Pin DIN 160/320 Blue – Dry – High Current
9	EHDL160-320-H EHDL160-320-L	Handle APP DIN 160/320 High Profile with 2 screws Handle APP DIN 160/320 Low Profile with 2 screws
10*	ETAT160-20	Air Adapter APP DIN 160 – Male



* Lower pilot auxiliary contacts use the same housing location as air tubes so they cannot be used together

Accessories E160		
Picture	Ordering code	Description
	993G4 994G4	Manual Release E160/320 with hardware kit – Battery Manual Release E160/320 with hardware kit – Charger/Truck
	A320LP-MK	Latch Plate E160/320
	A320HL-MK	Handle & Lever Assembly E160/320



One-stop shop

On-time delivery

Independent technical advice

Ordering code

Example:

E16550-1009

Series:

E160

Gender:

4 – Male

5 – Female

Main contacts:

00 – Non – order separately

16 – 16 mm² (6 AWG)

25 – 25 mm² (4 AWG)

35 – 35 mm² (2 AWG)

50 – 50 mm² (1/0 AWG to 1 AWG)

Handle:

0 – None

1 – Black*

*E160 comes standard with the low profile handle.

Coding key:

0 – Grey, wet cell

2 – Green, dry cell

3 – Yellow, universal (only on male housing)

4 – Blue, dry cell, high current

5 – Red, wet cell, high current

Auxiliary contacts & Air Tubes:

0 – None

1 – Lower pilot auxiliary contacts

2 – Upper auxiliary contacts

4 – Lower pilot auxiliary & upper auxiliary contacts

5 – Air Tube

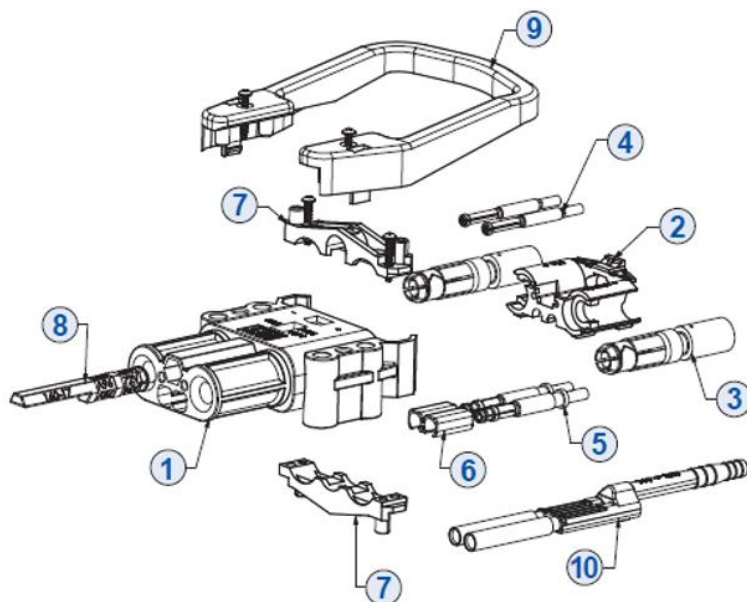
6 – Air Tube & Upper auxiliary contacts

Packing:

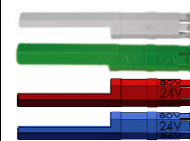
9 – Individual

8 – Bulk

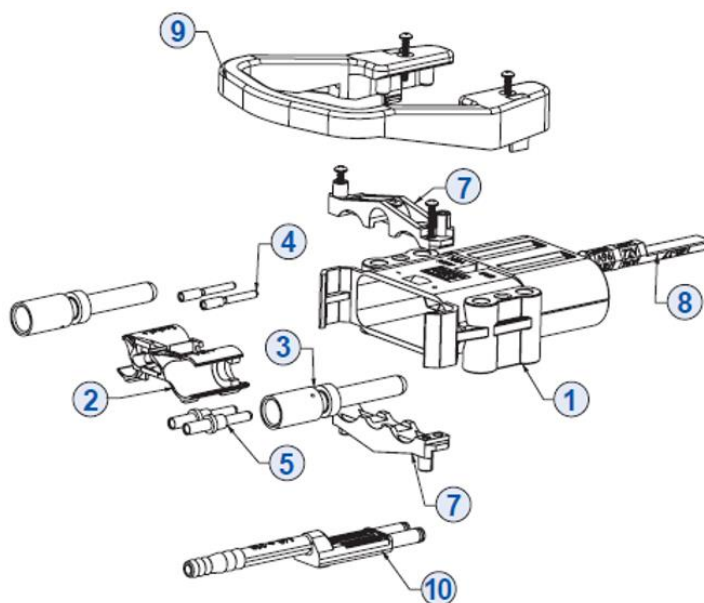
E320



Female connector E320		
Item	Ordering code	Description
1+2+6+7+8	E32500-0009	Housing APP type "E" 320 – Female – Grey Coding Pin
3	EC320-1150 EC320-1170 EC320-1195 EC320-1104	Main Contact APP DIN 320 Female – 50 mm ² (1 to 1/0 AWG) Main Contact APP DIN 320 Female – 70 mm ² (2/0 to 3/0 AWG) Main Contact APP DIN 320 Female – 95 mm ² (3/0 to 4/0 AWG) Main Contact APP DIN 320 Female – 120 mm ² (4/0 AWG)
4	EHC320-35	Upper Auxiliary Contact APP DIN type 320 "E" Female – 4,0 mm ²
5*	EPC160-13	Lower Pilot Auxiliary Contact APP DIN 160/320 "E" Female – 6,00 mm ²
6	EACH320-38	Auxiliary Contact Holder APP DIN 160/320
8	EVKS160-9 EVKD160-17 EVKS160-23F EVKD160-22F	Coding Pin DIN 160/320 Grey – Wet Coding Pin DIN 160/320 Green – Dry Coding Pin DIN 160/320 Red – Wet – High Current Coding Pin DIN 160/320 Blue – Dry – High Current
9	EHDL160-320-H EHDL160-320-L	Handle APP DIN 160/320 High Profile with 2 screws Handle APP DIN 160/320 Low Profile with 2 screws
10*	ETAT320-21	Air Adapter APP DIN type 320 – Female






* Lower pilot auxiliary contacts use the same housing location as air tubes so they cannot be used together



Male connector E320		
Item	Ordering code	Description
1+2+7+8	E32400-0009	Housing APP type "E" 320 – Male – Grey Coding Pin
3	EC320-1050 EC320-1070 EC320-1095 EC320-1004	Main Contact APP DIN 320 Male – 50 mm ² (1 to 1/0 AWG) Main Contact APP DIN 320 Male – 70 mm ² (2/0 to 3/0 AWG) Main Contact APP DIN 320 Male – 95 mm ² (3/0 to 4/0 AWG) Main Contact APP DIN 320 Male – 120 mm ² (4/0 AWG)
4	EHC320-34	Upper Auxiliary Contact APP DIN type 320 "E" Male – 4,0 mm ²
5*	EPC160-12	Lower Pilot Auxiliary Contact APP DIN 160/320 "E" Male – 6,0 mm ²
8	EVKS160-9 EVKD160-17 EVKU160-19 EVKS160-23M EVKD160-22M	Coding Pin DIN 160/320 Grey – Wet Coding Pin DIN 160/320 Green – Dry Coding Pin DIN 160/320 Yellow – Universal Coding Pin DIN 160/320 Red – Wet – High Current Coding Pin DIN 160/320 Blue – Dry – High Current
9	EHDL160-320-H EHDL160-320-L	Handle APP DIN 160/320 High Profile with 2 screws Handle APP DIN 160/320 Low Profile with 2 screws
10*	ETAT320-20	Air Adapter APP DIN 320 – Male



* Lower pilot auxiliary contacts use the same housing location as air tubes so they cannot be used together

Accessories E320		
Picture	Ordering code	Description
	993G4 994G4	Manual Release E160/320 with hardware kit – Battery Manual Release E160/320 with hardware kit – Charger/Truck
	A320LP-MK	Latch Plate E160/320
	A320HL-MK	Handle & Lever Assembly E160/320



One-stop shop

On-time delivery

Independent technical advice

Ordering code

Example:

E32550-1009

Series:

E320

Gender:

4 – Male

5 – Female

Main contacts:

00 – Non – order separately

50 – 50 mm² (1/0 AWG to 1 AWG)

70 – 70 mm² (2/0 AWG to 3/0 AWG)

95 – 95 mm² (3/0 AWG to 4/0 AWG)

04 – 120 mm² (4/0 AWG)

Handle:

0 – None

1 – Black*

*E320 comes standard with the high profile handle.

Coding key:

0 – Grey, wet cell

2 – Green, dry cell

3 – Yellow, universal (only on male housing)

4 – Blue, dry cell, high current

5 – Red, wet cell, high current

Auxiliary contacts & Air Tubes:

0 – None

1 – Lower pilot auxiliary contacts

2 – Upper auxiliary contacts

4 – Lower pilot auxiliary & upper auxiliary contacts

5 – Air Tube

6 – Air Tube & Upper auxiliary contacts

Packing:

9 – Individual

8 – Bulk