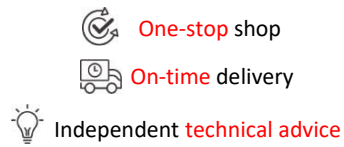




In partnership with



## REMA CONNECTORS




REMA Group, with locations in Germany, China and the USA, is one of the international technological leaders in the field of high-current contact systems. They develop and produce connector systems for charging electric vehicles, high-current connection materials and crimping tools as well as technologically sophisticated operator interfaces with integrated electronics. The development of the company was always supported by intensive research and development work. Through targeted knowledge transfer, new markets are continually explored and new, innovative products developed.

## Rema Explosion Proof Connector

Electrical connector especially designed for the use in hazardous areas.


### Product features and advantages:


- Approved for Zone 1 (gas) and Zone 21 (dust).
- „Ex“ marking 
- Compliant with the European directive 2014/34/EU „Equipment and protective systems intended for use in potentially explosive atmospheres“ and following standards:
  - EN60079-0: General requirements
  - EN60079-1: Equipment protection by flameproof enclosures „d“
  - EN60079-7: Equipment protection by increased safety „e“
  - EN60079-31: Explosive atmospheres. Equipment dust ignition protection by enclosure „t“
- REMA developed contacts made out of pure high conductive Cu-ETP copper with silver plated surface and an anti-friction and tarnish coating which ensure:
  - a power transition with minimal losses
  - long lifetime
- Polarity and combination protection through contact coding.
- Solder joint for gas tight connection between contact and cable.
- Screw for connecting socket and cable.
- DR E250 ex with a cable  $\geq 50 \text{ mm}^2$  can conduct up to 250A continuously.
- DR E250 ex may be used for lower operating current with smaller cross-section cables.

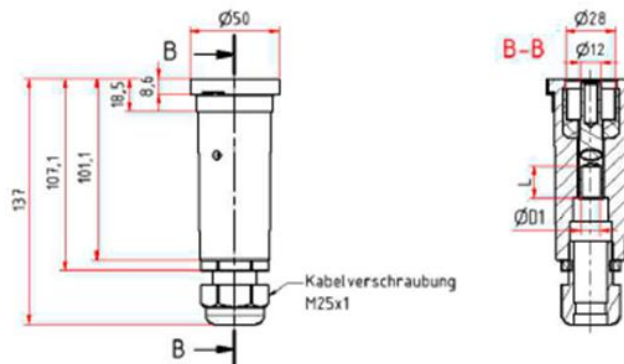


## DR E250 EX – Male connector – Positive



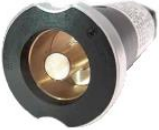
Male connector - positive		
Picture	Ordering code	Description
	79250-00	DR E250 ex Plug - positive - 25-50 mm <sup>2</sup> - male
	79270-00	DR E250 ex Plug - positive - 70 mm <sup>2</sup> - male

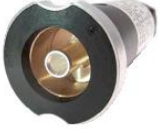
Male connector - positive - with coding contact		
Picture	Ordering code	Description
	79250-05	DR E250 ex Plug - positive - 25-50 mm <sup>2</sup> - male - with coding system
	79270-05	DR E250 ex Plug - positive - 70 mm <sup>2</sup> - male - with coding system

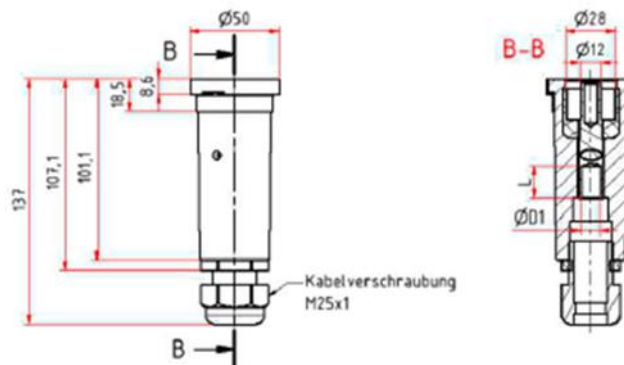


## DR E250 EX – Male connector – Negative




Male connector - negative		
Picture	Ordering code	Description
	79250-01	DR E250 ex Plug - negative - 25-50 mm <sup>2</sup> - male
	79270-01	DR E250 ex Plug - negative - 70 mm <sup>2</sup> - male


Male connector - negative - with coding contact		
Picture	Ordering code	Description
	79250-06	DR E250 ex Plug - negative - 25-50 mm <sup>2</sup> - male - with coding system
	79270-06	DR E250 ex Plug - negative - 70 mm <sup>2</sup> - male - with coding system

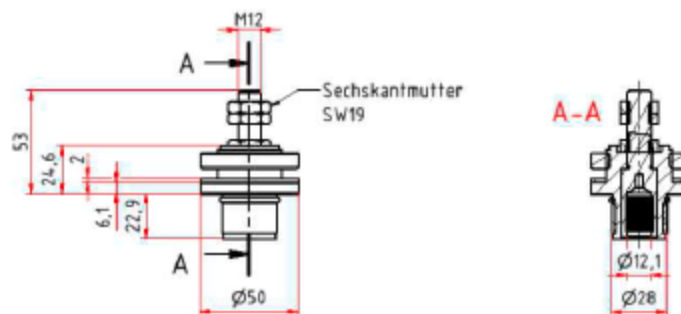




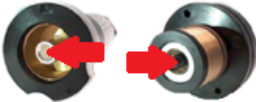
## DR E250 EX – Female connector



Female connector		
Picture	Ordering code	Description
	79350-00	DR E250 ex M12 - female - with screw connection

Female connector - with coding contact		
Picture	Ordering code	Description
	79350-05	DR E250 ex M12 - female - with screw connection and coding system



<b>Extra info</b>	
<b>Picture</b>	<b>Description</b>
	Male connector (plug) - positive
	Male connector (plug) - negative
	Male and female connector with coding contact